

Result of Analysis

Parents Feedback regarding curriculum and infrastructure (2020-21)

The college aims to offer the best possible learning environment to the students in order to enable them to develop full potential. Students feedback related to curriculum as well as infrastructure is very significant to enhance the quality of teaching and learning experience. Feedback from parents' allow them the opportunities to comment on various aspects of curriculum and infrastructure this provides us with valuable suggestions for further improvements.

Methodology

Feedback from students on curriculum and infrastructure was obtained through structured questioner which included 10 questions in various aspects.

A Five-point Likert scale is used with Weights assigned from 1 to 5 to different levels as follow.

1. Strongly Disagree
2. Disagree
3. Neutral
4. Agree
5. Strongly Agree

The range of each order and level is determine by the following formula

(Highest point in Likert scale – Lowest Point in Likert Scale) / Number of Levels)

$$\text{Range} = (5-1)/5=4/5=0.8$$

$$\text{Range for Strongly Disagree} = (1.0 \text{ to } 1.8)$$

$$\text{Range for Disagree} = (1.8 \text{ to } 2.6)$$

$$\text{Range for Neutral} = (2.6 \text{ to } 3.4)$$

$$\text{Range for Agree} = (3.4 \text{ to } 4.2)$$

$$\text{Range for Strongly Agree} = (4.2 \text{ to } 5.0)$$

1. Your Ward is comfortable in coping up with the workload of the college.
 (ਤੁਹਾਡਾ ਵਾਰਡ ਕਾਲਜ ਦੇ ਕੰਮ ਦੇ ਬੋਝ ਦਾ ਸਾਮ੍ਹਣਾ ਕਰਨ ਵਿੱਚ ਆਰਾਮ ਦਾਇਕ ਹੈ।)

	Strongly Agree	Agree	Neutral	Disagree	Strongly Disagree	Total
Number of Parents Responses	100	95	85	08	02	290
Percentage	34.41	32.71	29.31	2.75	0.68	100
Weighted Score	500	380	255	16	02	1153
Weighted Mean Score						3.97

Table 1. Shows that out of 290 parents surveyed. 100 i.e., 34.41% parents strongly agree that their ward is comfortable in coping with the workload of the college, 95 i.e. 32.71% of parents agree for the same, 85 i.e.29.31%, parents views are neutral, 8 i.e. 2.75% parents are disagree and 2 i.e. 0.68% parents are strongly disagree that their ward is comfortable in coping with the workload of the college.

The results of Question 1 are presented below in the diagram as shown fig.1

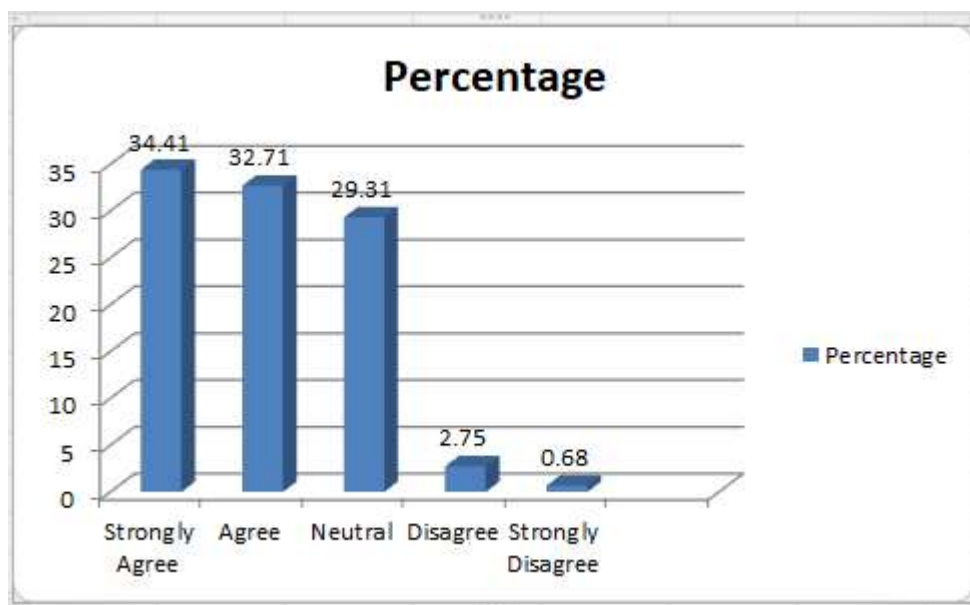


Fig 1 . Percentage of responses on basis that your ward is comfortable in copying up with the workload of the college

Here, it is also observed that Weighted Mean Score of Question 1 is 3.976 which lies between the Likert ranges of 3.4 to 4.2 i.e. range for 'Agree'. So, it can be concluded that there the agreement between parents that their ward is comfortable in coping up with the workload of the college.

2. The curriculum being taught is relevant to the global requirements. (ਪੜ੍ਹਾਇਆ ਜਾ ਰਿਹਾ ਪਾਠਕ੍ਰਮ ਗਲੋਬਲ ਲੋੜਾਂ ਅਨੁਸਾਰ ਢੁਕਵਾਂ ਹੈ।)

	Strongly Agree	Agree	Neutral	Disagree	Strongly Disagree	Total
Number of parents Responses	60	150	75	05	0	290
Percentage	20.68	51.72	25.86	1.72	0	100
Weighted Score	300	600	225	10	0	1135
Weighted Mean Score						3.91

Table 2. Shows that out of 290 parents surveyed. 60 i.e. 20.68% parents strongly agree that the curriculum being taught is relevant to the global requirements, 150 i.e. 51.72% of parents agree for the same, 75 i.e. 25.86%, parents views are neutral, 5 i.e. 1.72% parents are disagree and 0 i.e. 0% parents are strongly disagree that the curriculum being taught is relevant to the global requirements.

The results of Question 2 are presented below in the diagram as shown fig.2

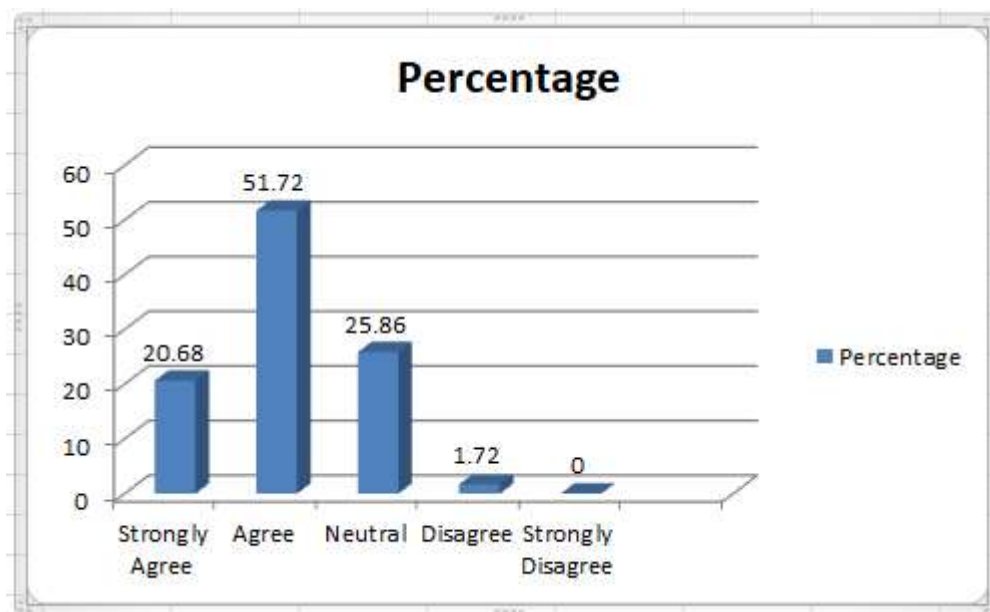


Fig 2. Percentage of responses on basis that the curriculum being taught is relevant to the global requirements

Here, it is also observed that Weighted Mean Score of Question 2 is 3.91 which lies between the Likert ranges of 3.4 to 4.2 i.e. range for 'Agree'. So, it can be concluded that there the agreement between parents that the curriculum being taught is relevant to the global requirements.

3. The soft skills knowledge and integrity in your ward are enhanced while studying in College.

(ਕਾਲਜ ਵਿੱਚ ਪੜ੍ਹਦੇ ਸਮੇਂ ਤੁਹਾਡੇ ਵਾਰਡ ਵਿੱਚ ਸਾਫਟ ਸਕਿੱਲ ਗਿਆਨ ਅਤੇ ਇਮਾਨਦਾਰੀ ਨੂੰ ਵਧਾਇਆ ਜਾਂਦਾ ਹੈ।)

	Strongly Agree	Agree	Neutral	Disagree	Strongly Disagree	Total
Number of parents Responses	60	200	02	25	03	290
Percentage	20.6	68.97	0.68	8.62	1.03	100
Weighted Score	300	800	06	50	03	1159
Weighted Mean Score						3.99

Table 3. Shows that out of 290 parents surveyed. 60 i.e. 20.6% parents strongly agree that their ward knowledge and integrity has been enhanced while studying in college, 200 i.e. 68.97% of parents agree for the same, 2 i.e. 0.68%, parents views are neutral, 25 i.e. 8.62% parents are disagree and 3 i.e. 1.03% parents are strongly disagree.

The results of Question 3 are presented below in the diagram as shown fig.3

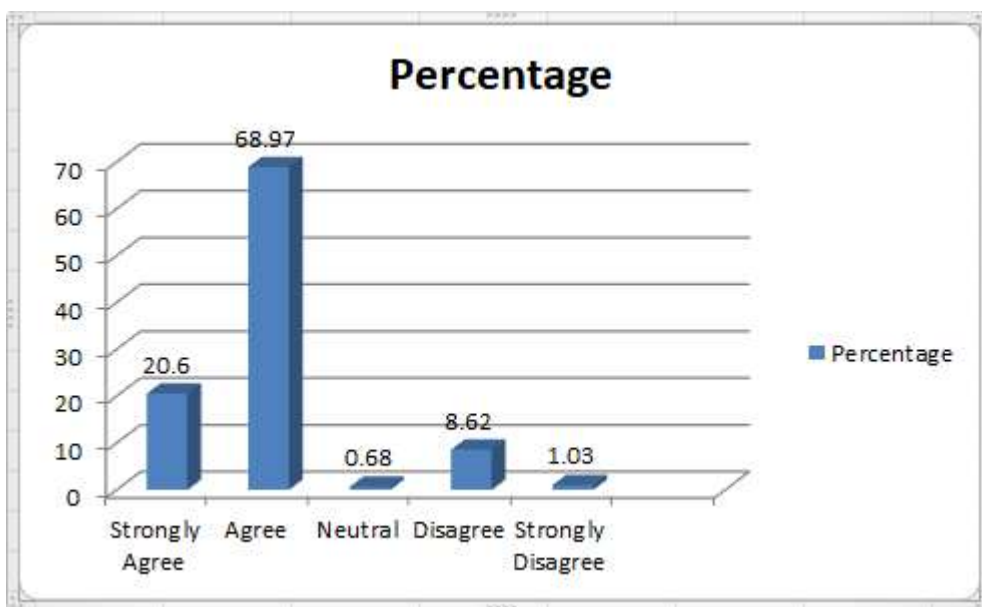


Fig 3. Percentage of responses on basis that the soft skill knowledge and integrity in your ward are enhanced while studying in college

Here, it is also observed that Weighted Mean Score of Question 3 is 3.99 which lies between the Likert range of 3.4 to 4.2 i.e. range for 'Agree'. So, it can be concluded that there the agreement between parents that the soft skills Knowledge and integrity in your ward are enhanced while studying in college.

4. Discipline and work culture of the college is appreciable. (ਕਾਲਜ ਦਾ ਅਨੁਸ਼ਾਸਨ ਅਤੇ ਕਾਰਜ ਸੱਭਿਆਚਾਰ ਸ਼ਲਾਘਾਯੋਗ ਹੈ।)

	Strongly Agree	Agree	Neutral	Disagree	Strongly Disagree	Total
Number of parents Responses	15	200	70	05	0	290
Percentage	5.17	68.9	24.13	1.72	0	100
Weighted Score	75	800	210	10	0	1095
Weighted Mean Score						3.771

Table 4. Shows that out of 290 parents surveyed. 15 i.e. 5.17% parents strongly agree that Discipline and work culture of the college is appreciable, 200 i.e. 68.9% of parents agree for the same, 70 i.e. 24.13%, parents views are neutral, 5 i.e. 1.72% parents are disagree and 0 i.e. 0% parents are strongly disagree.

The results of Question 4 are presented below in the diagram as shown fig.4

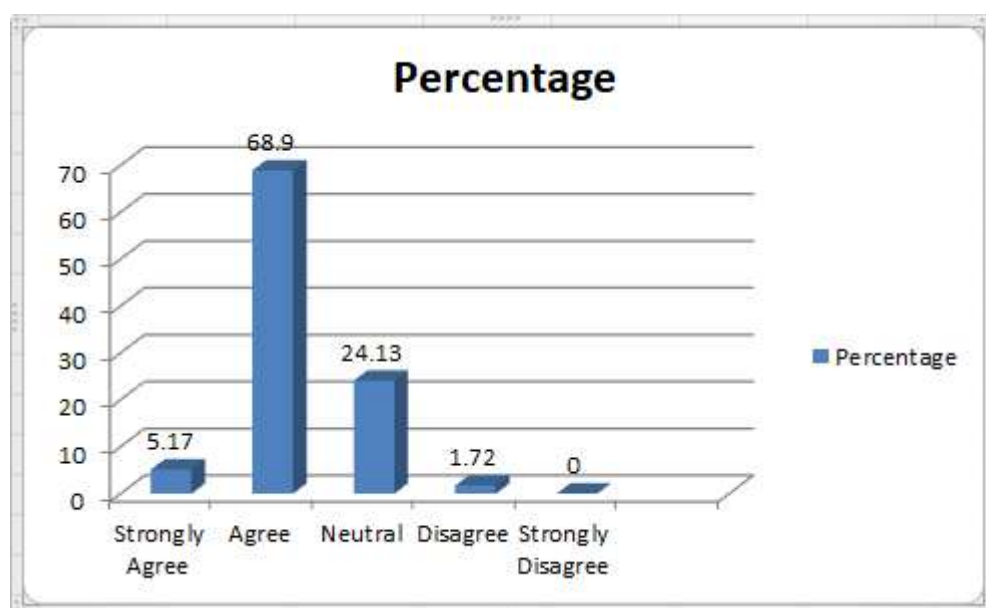


Fig 4 . Percentage of responses on basis that discipline and work culture of the college is appreciable

Here, it is also observed that Weighted Mean Score of Question 4 is 3.771 which lies between the Likert range of 3.4 to 4.2 i.e. range for 'Agree'. So, it can be concluded that there the agreement between parents that the Discipline and work culture of the college is appreciable.

5. The college library has sufficient number of reference material and books relating to college curriculum. (ਕਾਲਜ ਦੀ ਲਾਇਬ੍ਰੇਰੀ ਵਿੱਚ ਕਾਲਜ ਦੇ ਪਾਠਕ੍ਰਮ ਨਾਲ ਸਬੰਧਤ ਸੰਦਰਭ ਸਮੱਗਰੀ ਅਤੇ ਕਿਤਾਬਾਂ ਦੀ ਕਾਫੀ ਗਿਣਤੀ ਹੈ।)

	Strongly Agree	Agree	Neutral	Disagree	Strongly Disagree	Total
Number of Parents Responses	85	122	65	14	04	290
Percentage	29.31	42.06	22.41	4.82	1.37	100
Weighted Score	425	488	195	28	04	1140
Weighted Mean Score						3.93

Table 5. Shows that out of 290 parents surveyed. 85 i.e. 29.31% parents strongly agree that the college library has sufficient number of reference material and books relating to college curriculum. , 122 i.e. 42.06% of parents agree for the same, 65 i.e. 22.41%, parents views are neutral, 14 i.e. 4.82%, parents are disagree and 4 i.e. 1.37% parents are strongly disagree.

The results of Question 5 are presented below in the diagram as shown fig.5

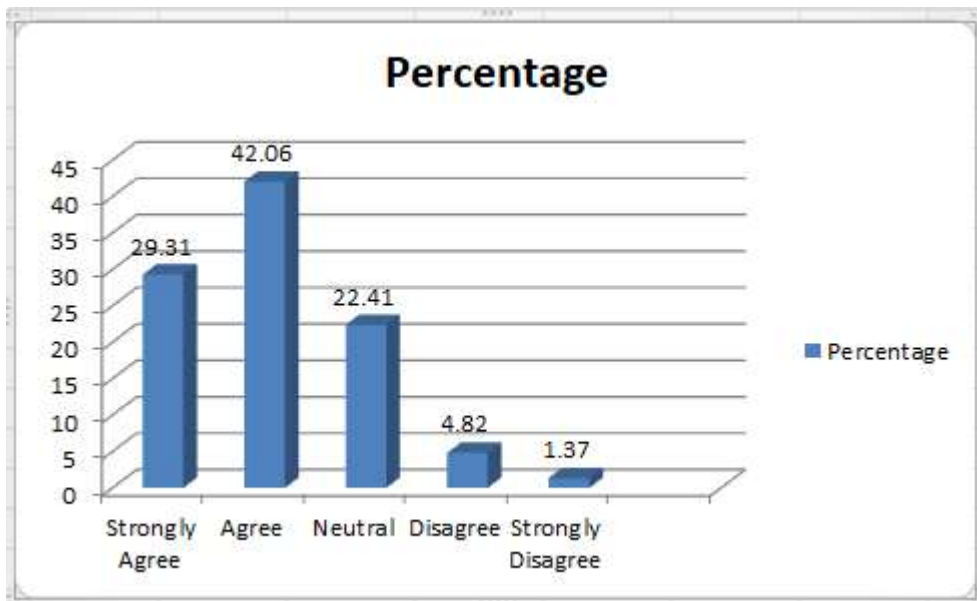


Fig 5. Percentage of responses on basis that the college library has sufficient number of reference material and books related to college curriculum

Here, it is also observed that Weighted Mean Score of Question 5 is 3.93 which lies between the Likert range of 3.4 to 4.2 i.e. range for 'Strongly Agree'. So, it can be concluded that there the college library has sufficient number of reference material and books relating to college curriculum.

6. Availability of syllabus based e-resources is adequate. (ਸਿਲੇਬਸ ਆਧਾਰਿਤ ਈ-ਸਰੋਤ ਦੀ ਉਪਲਬਧਤਾ ਕਾਫ਼ੀ ਹੈ।)

	Strongly Agree	Agree	Neutral	Disagree	Strongly Disagree	Total
Number of parents Responses	50	150	70	15	05	290
Percentage	17.2	51.7	24.13	5.17	1.72	100
Weighted Score	250	600	210	30	05	1095
Weighted Mean Score						3.77

Table 6. Shows that out of 290 parents surveyed. 50 i.e. 17.2% parents strongly agree that availability of syllabus based e-resources is adequate., 150 i.e. 51.7% of parents agree for the same, 70 i.e.24.13%, parents views are neutral, 15i.e. 5.17% parents are disagree and 5 i.e. 1.72% parents are strongly disagree.

The results of Question 6 are presented below in the diagram as shown fig.6

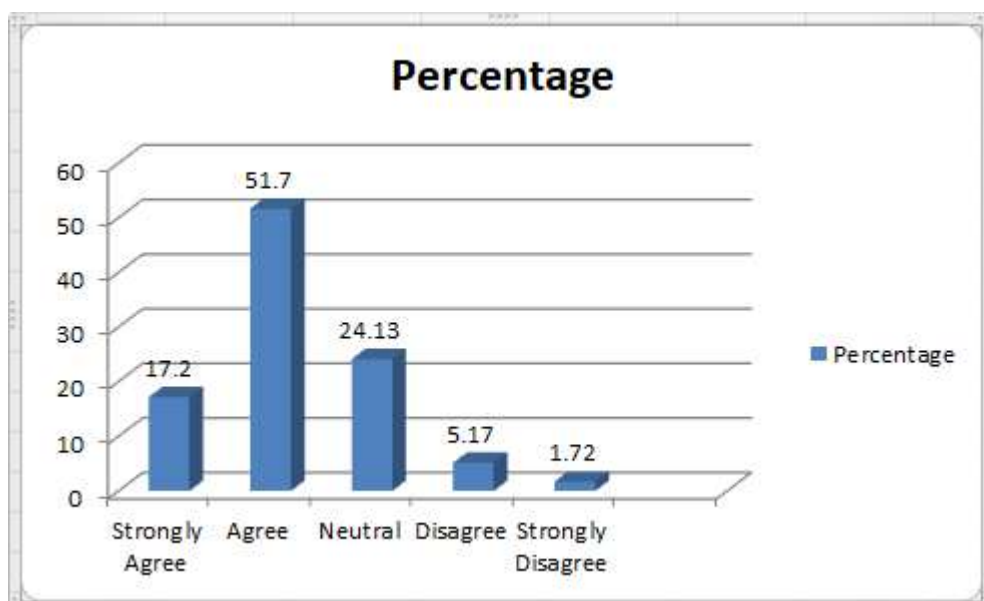


Fig 6. Percentage of responses on basis that availability of syllabus based e-resources is adequate

Here, it is also observed that Weighted Mean Score of Question 6 is 3.77 which lies between the Likert ranges of 3.4 to 4.2 i.e. range for 'Agree'. So, it can be concluded that there the availability of syllabus based e-.resources is adequate.

7. The college provides counselling and guidance to the students. (ਕਾਲਜ ਵਿਦਿਆਰਥੀਆਂ ਨੂੰ ਕਾਉਂਸਲਿੰਗ ਅਤੇ ਮਾਰਗਦਰਸ਼ਨ ਪ੍ਰਦਾਨ ਕਰਦਾ ਹੈ।)

	Strongly Agree	Agree	Neutral	Disagree	Strongly Disagree	Total
Number of parents Responses	50	170	65	03	02	290
Percentage	17.24	58.62	22.41	1.03	0.68	100
Weighted Score	250	680	195	06	02	1133
Weighted Mean Score						3.906

Table 7. Shows that out of 290 parents surveyed. 50 i.e. 17.24% parents strongly agree that the college provides counselling and guidance to the students. , 170 i.e. 58.62% of parents agree for the same, 65 i.e.22.41%, parents views are neutral, 3i.e. 1.03% parents are disagree and 2i.e. 0.68% parents are strongly disagree.

The results of Question 7 are presented below in the diagram as shown fig.7

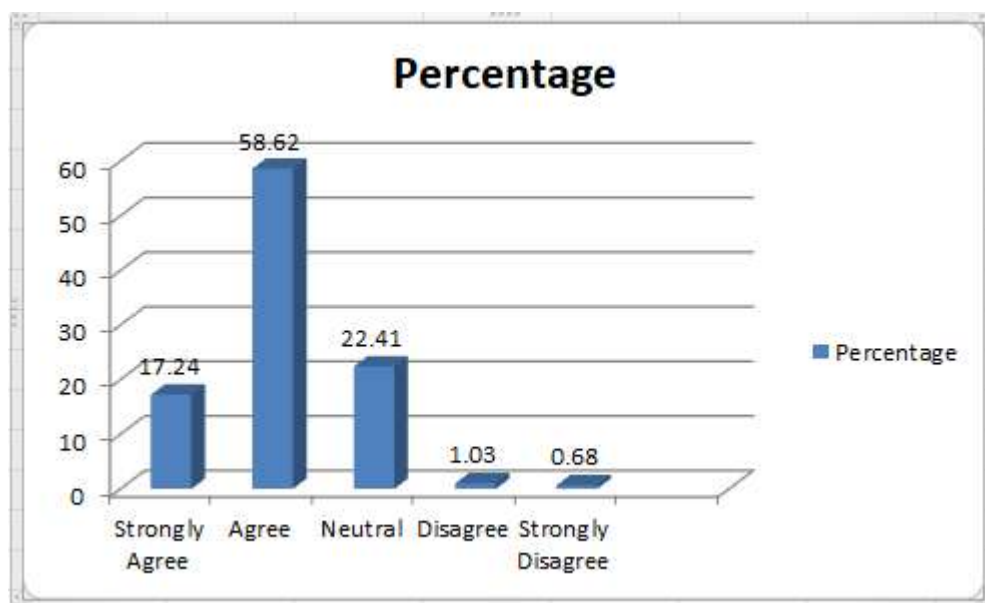


Fig 7. Percentage of responses on basis that the college provides counselling and guidance to the students

Here, it is also observed that Weighted Mean Score of Question 7 is 3.906 which lies between the Likertrange of 3.4 to 4.2 i.e. range for 'Agree'. So, it can be concluded that there the agreement between parents that the college provides counselling and guidance to the students.

8. Extracurricular activities are very encouraging.

(ਪਾਠਕ੍ਰਮ ਤੋਂ ਬਾਹਰ ਦੀਆਂ ਗਤੀਵਿਧੀਆਂ ਬਹੁਤ ਉਤਸ਼ਾਹਜਨਕ ਹਨ।)

	Strongly Agree	Agree	Neutral	Disagree	Strongly Disagree	Total
Number of parents Responses	02	270	10	04	04	290
Percentage	0.68	93.10	3.44	1.38	1.38	100
Weighted Score	10	1080	30	08	04	1132
Weighted Mean Score						3.90

Table 8. Shows that out of 290 parents surveyed. 2 i.e. 0.68% parents strongly agree that the Extracurricular activities are very encouraging. , 270 i.e. 93.10% of parents agree for the same, 10 i.e. 3.44%, parents views are neutral, 4 i.e. 1.38% parents are disagree and 4 i.e. 1.38% parents are strongly disagree.

The results of Question 8 are presented below in the diagram as shown fig.8

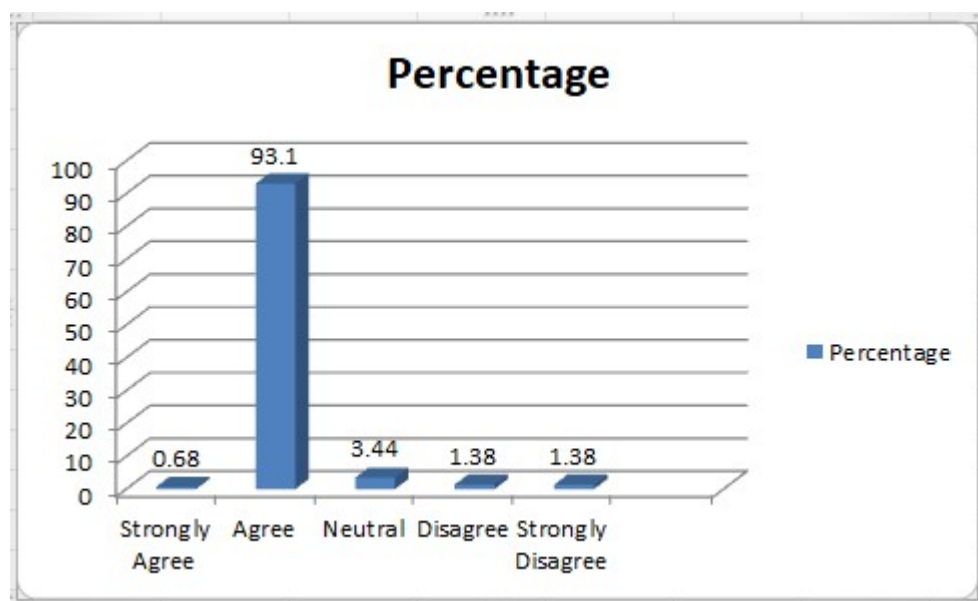


Fig 8 . Percentage of responses on basis that extracurricular activities are very encouraging

Here, it is also observed that Weighted Mean Score of Question 8 is 3.90 which lies between the Likertranges of 3.4 to 4.2 i.e. range for 'Agree'. So, it can be concluded that there the agreement between parents that extracurricular activities are very strong.

9. Sports facilities are very attractive. (ਖੇਡਾਂ ਦੀਆਂ ਸਹੂਲਤਾਂ ਬਹੁਤ ਆਕਰਸ਼ਕ ਹਨ।)

	Strongly Agree	Agree	Neutral	Disagree	Strongly Disagree	Total
Number of parents Responses	50	200	38	01	01	290
Percentage	17.24	68.9	13.10	0.34	0.34	100
Weighted Score	250	800	114	02	01	1167
Weighted Mean Score						4.024

Table 9. Shows that out of 290 parents surveyed. 50 i.e. 17.24% parents strongly agree that the college has attractive sports facilities., 200 i.e. 68.9% of parents agree for the same, 38 i.e. 13.10%, parents views are neutral, 1 i.e. 0.34% parents are disagree and 01 i.e. 0.34% parents are strongly disagree.

The results of Question 9 are presented below in the diagram as shown fig9

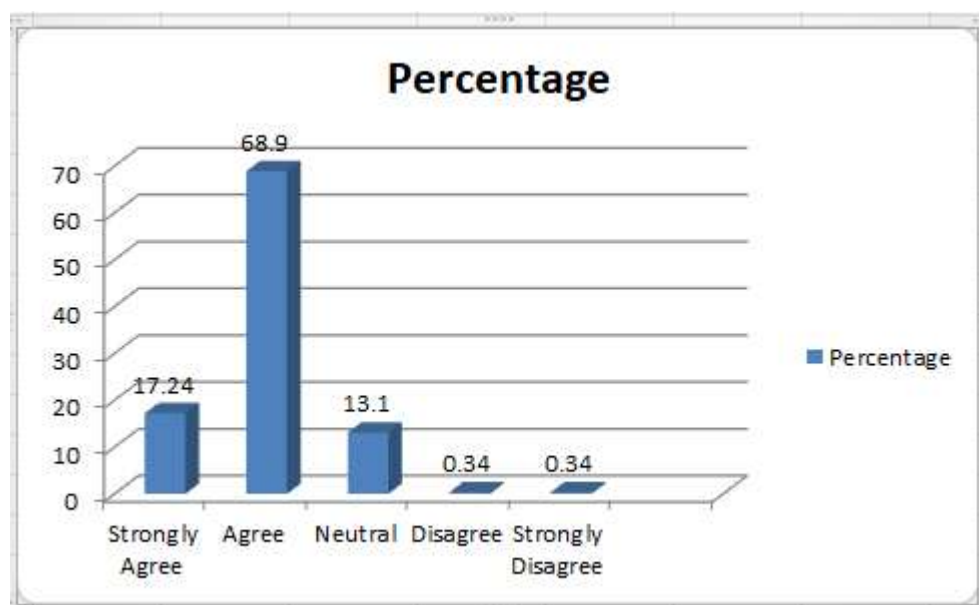


Fig 9. Percentage of responses on basis that the sports facilities are very attractive

Here, it is also observed that Weighted Mean Score of Question 9 is 4.024 which lies between the Likert ranges of 3.4 to 4.2 i.e. range for 'Agree'. So, it can be concluded that there the agreement between parents that the Sports facilities are very attractive.

10. The college makes considerable efforts for holistic growth of students. (ਕਾਲਜ ਵਿੱਚ ਆਰਥੀ ਆਂਦੇਸਰ ਵੱਖੀ ਵਿਕਾਸ ਲਈ ਕਾਫ਼ੀ ਉਪਰਾਲੇ ਕਰਦਾ ਹੈ।)

	Strongly Agree	Agree	Neutral	Disagree	Strongly Disagree	Total
Number of parents Responses	20	250	05	10	05	290
Percentage	6.89	86.2	1.72	3.44	1.72	100
Weighted Score	100	1000	15	20	05	1140
Weighted Mean Score						3.93

Table 10. Shows that out of 290 parents surveyed. 20 i.e. 6.89% parents strongly agree that the college makes considerable efforts for holistic growth of students., 250 i.e. 86.2% of parents agree for the same, 5 i.e. 1.72%, parents views are neutral, 10 i.e. 3.44% parents are disagree and 5 i.e. 1.72% parents are strongly disagree.

The results of Question 10 are presented below in the diagram as shown fig.10

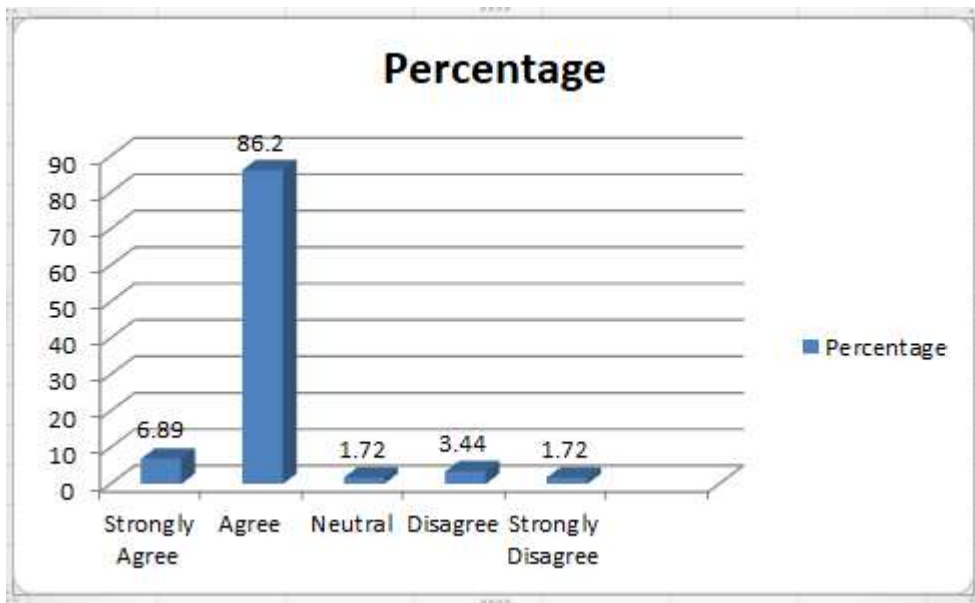


Fig 10. Percentage of responses on basis that the college makes considerable efforts for holistic growth of students

Here, it is also observed that Weighted Mean Score of Question 10 is 3.93 which lies between the Likert ranges of 3.4 to 4.2 i.e. range for 'Agree'. So, it can be concluded that there the agreement between parents that the college makes considerable efforts for holistic growth of students.

Conclusion: -

Following table and diagram present Weighted Mean Score on various questions.

Table 11 :

S.no	Questions (1-10)	Weighted Mean Score
1	Your ward is comfortable in coping up with the workload of the college.	3.98
2	The curriculum being taught is relevant to the global requirements.	3.91
3	The soft skills knowledge and integrity in your ward are enhanced while studying in college.	3.99
4	Discipline and work culture of the college is appreciable.	3.77
5	The college library has sufficient number of reference material and books relating to college curriculum.	3.93
6	Availability of syllabus based e-resource is adequate.	3.77
7	The college provides counselling and guidance to the students.	3.91
8	Extracurricular activities are very encouraging.	3.90
9	Sports facilities are very attractive.	4.02
10	The college makes considerable efforts for holistic growth of students.	3.93
Average of Weighted Mean Score		3.91

Weighted Mean Score

