

Result of Analysis

Parents Feedback regarding curriculum and infrastructure (2019-20)

The college aims to offer the best possible learning environment to the students in order to enable them to develop full potential. Students feedback related to curriculum as well as infrastructure is very significant to enhance the quality of teaching and learning experience. Feedback from parents' allow them the opportunities to comment on various aspects of curriculum and infrastructure this provides us with valuable suggestions for further improvements.

Methodology

Feedback from students on curriculum and infrastructure was obtained through structured questioner which included 10 questions in various aspects.

A Five-point Likert scale is used with Weights assigned from 1 to 5 to different levels as follow.

1. Strongly Disagree
2. Disagree
3. Neutral
4. Agree
5. Strongly Agree

The range of each order and level is determine by the following formula

(Highest point in Likert scale – Lowest Point in Likert Scale) / Number of Levels)

$$\text{Range} = (5-1)/5=4/5=0.8$$

$$\text{Range for Strongly Disagree} = (1.0 \text{ to } 1.8)$$

$$\text{Range for Disagree} = (1.8 \text{ to } 2.6)$$

$$\text{Range for Neutral} = (2.6 \text{ to } 3.4)$$

$$\text{Range for Agree} = (3.4 \text{ to } 4.2)$$

$$\text{Range for Strongly Agree} = (4.2 \text{ to } 5.0)$$

1. Your Ward is comfortable in coping up with the workload of the college.
(ਤੁਹਾਡਾ ਵਾਰਡ ਕਾਲਜ ਦੇ ਕੰਮ ਦੇ ਬੋਝ ਦਾ ਸਾਮ੍ਹਣਾ ਕਰਨ ਵਿੱਚ ਆਰਾਮ ਦਾਇਕ ਹੈ।)

	Strongly Agree	Agree	Neutral	Disagree	Strongly Disagree	Total
Number of Parents Responses	105	95	42	06	02	250
Percentage	42	38	16.8	2.4	0.8	100
Weighted Score	525	380	126	12	02	1045
Weighted Mean Score						4.18

Table 1. Shows that out of 250 parents surveyed. 105 i.e., 42% parents strongly agree that their ward is comfortable in coping with the workload of the college, 95 i.e. 38% of parents agree for the same, 42 i.e. 16.8%, parents views are neutral, 06 i.e. 2.4% parents are disagree and 02 i.e. 0.8% parents are strongly disagree that their ward is comfortable in coping with the workload of the college.

The results of Question 1 are presented below in the diagram as shown fig.1

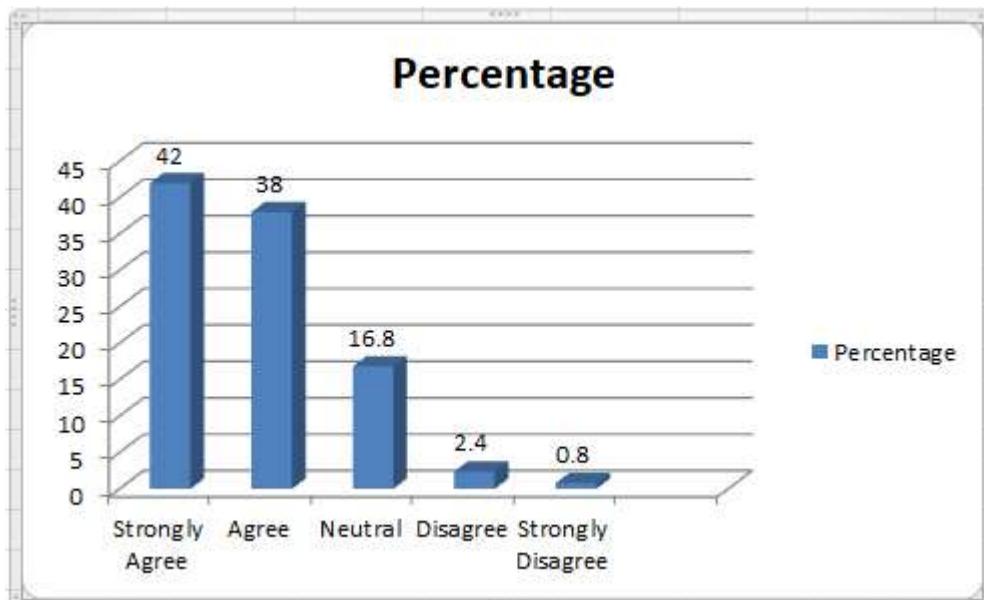


Fig 1 . Percentage of responses on basis that your ward is comfortable in copying up with the workload of the college

Here, it is also observed that Weighted Mean Score of Question 1 is 3.612 which lies between the Likert ranges of 3.4 to 4.2 i.e. range for 'Agree'. So, it can be concluded that there the agreement between parents that there ward is comfortable in coping up with the workload of the college.

2. The curriculum being taught is relevant to the global requirements.(ਪੜ੍ਹਾਇਆ ਜਾ ਰਿਹਾ ਪਾਠਕ੍ਰਮ ਗਲੋਬਲ ਲੋੜਾਂ ਅਨੁਸਾਰ ਢੁਕਵਾਂ ਹੈ।)

	Strongly Agree	Agree	Neutral	Disagree	Strongly Disagree	Total
Number of parents Responses	100	105	40	04	01	250
Percentage	40	42	16	1.6	0.4	100
Weighted Score	500	420	48	08	01	977
Weighted Mean Score						3.908

Table 2 Shows that out of 250 parents surveyed. 100 i.e. 40% parents strongly agree that the curriculum being taught is relevant to the global requirements, 105 i.e. 42% of parents agree for the same, 40 i.e. 16%, parents views are neutral, 4 i.e. 1.6% parents are disagree and 01 i.e. 0.4% parents are strongly disagree that the curriculum being taught is relevant to the global requirements.

The results of Question 2 are presented below in the diagram as shown fig.2

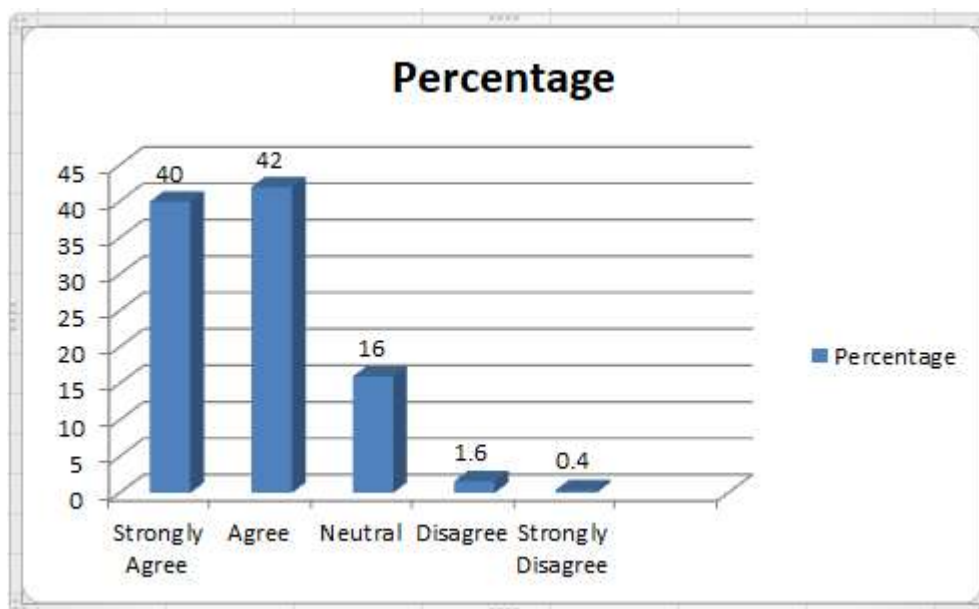


Fig 2 . Percentage of responses on basis that the curriculum being taught is relevant to the global requirements

Here, it is also observed that Weighted Mean Score of Question 2 is 3.92 which lies between the Likert ranges of 3.4 to 4.2 i.e. range for 'Agree'. So, it can be concluded that there the agreement between parents that the curriculum being taught is relevant to the global requirements.

3. The soft skills knowledge and integrity in your ward are enhanced while studying in College.

(ਕਾਲਜ ਵਿੱਚ ਪੜ੍ਹਦੇ ਸਮੇਂ ਤੁਹਾਡੇ ਵਾਰਡ ਵਿੱਚ ਸਾਫਟ ਸਕਿੱਲ ਗਿਆਨ ਅਤੇ ਇਮਾਨਦਾਰੀ ਨੂੰ ਵਧਾਇਆ ਜਾਂਦਾ ਹੈ।)

	Strongly Agree	Agree	Neutral	Disagree	Strongly Disagree	Total
Number of parents Responses	96	104	40	07	03	250
Percentage	38.4	41.6	16	2.8	1.2	100
Weighted Score	480	416	120	14	03	1033
Weighted Mean Score						4.132

Table 3. Shows that out of 250 parents surveyed. 96 i.e. 38.4% parents strongly agree that there ward knowledge and integrity has been enhanced while studying in college, 104 i.e. 41.6% of parents agree for the same, 40 i.e.16%, parents views are neutral, 7 i.e. 2.8% parents are disagree and 3 i.e. 1.2% parents are strongly disagree.

The results of Question 3 are presented below in the diagram as shown fig.3

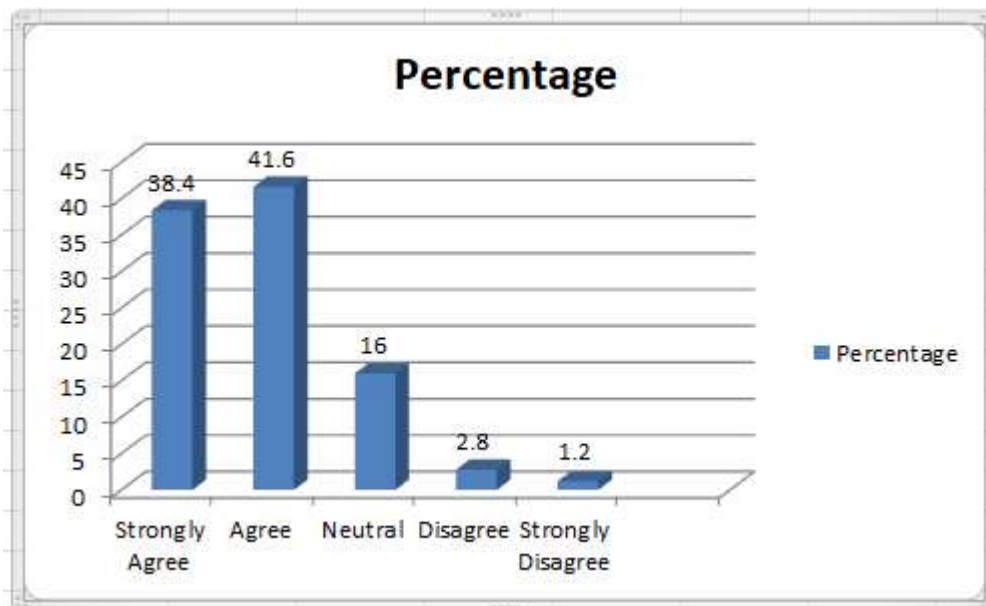


Fig 3 .Percentage of responses on basis that the soft skill knowledge and integrity in your ward are enhanced while studying in college.

Here, it is also observed that Weighted Mean Score of Question 3 is 4.132 which lies between the Likert range of 3.4 to 4.2 i.e. range for 'Agree'. So, it can be concluded that there the agreement between parents that the soft skills Knowledge and integrity in your ward are enhanced while studying in college.

4. Discipline and work culture of the college is appreciable. (ਕਾਲਜ ਦਾ ਅਨੁਸ਼ਾਸਨ ਅਤੇ ਕਾਰਜ ਸੰਭਿਆਚਾਰ ਸਲਾਘਾਯੋਗ ਹੈ।)

	Strongly Agree	Agree	Neutral	Disagree	Strongly Disagree	Total
Number of parents Responses	103	95	45	05	02	250
Percentage	41.2	38	18	02	0.8	100
Weighted Score	515	380	135	10	02	1042
Weighted Mean Score						4.168

Table 4. Shows that out of 250 parents surveyed. 103 i.e. 41.2% parents strongly agree that Discipline and work culture of the college is appreciable, 95 i.e. 38% of parents agree for the same, 45 i.e. 18%, parents views are neutral, 5 i.e. 2% parents are disagree and 2 i.e. 0.8% parents are strongly disagree.

The results of Question 4 are presented below in the diagram as shown fig.4

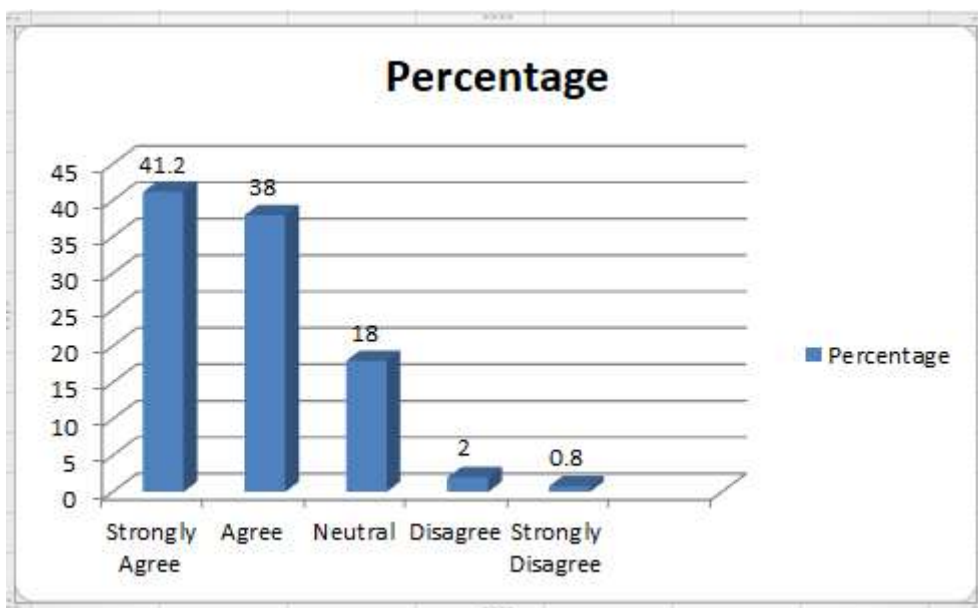


Fig 4. Percentage of responses on basis that the Discipline and work culture of the college is appreciable

Here, it is also observed that Weighted Mean Score of Question 4 is 4.168 which lies between the Likert range of 3.4 to 4.2 i.e. range for 'Agree'. So, it can be concluded that there the agreement between parents that the Discipline and work culture of the college is appreciable.

5. The college library has sufficient number of reference material and books relating to college

curriculum. (ਕਾਲਜ ਦੀ ਲਾਇਬ੍ਰੇਰੀ ਵਿੱਚ ਕਾਲਜ ਦੇ ਪਾਠਕ੍ਰਮ ਨਾਲ ਸਬੰਧਤ ਸੰਦਰਭ ਸਮੱਗਰੀ ਅਤੇ ਕਿਤਾਬਾਂ ਦੀ ਕਾਫੀ ਗਿਣਤੀ ਹੈ।)

	Strongly Agree	Agree	Neutral	Disagree	Strongly Disagree	Total
Number of Parents Responses	98	124	25	02	01	250
Percentage	39.2	49.6	10	0.8	0.4	100
Weighted Score	475	496	75	04	01	1051
Weighted Mean Score						4.204

Table 5. Shows that out of 250 parents surveyed. 98 i.e. 39.2% parents strongly agree that the college library has sufficient number of reference material and books relating to college curriculum. , 124 i.e. 49.6% of parents agree for the same, 25 i.e.10%, parents views are neutral, 2 i.e. 0.8%, parents are disagree and 01 i.e.0.4% parents are strongly disagree.

The results of Question 5 are presented below in the diagram as shown fig.5

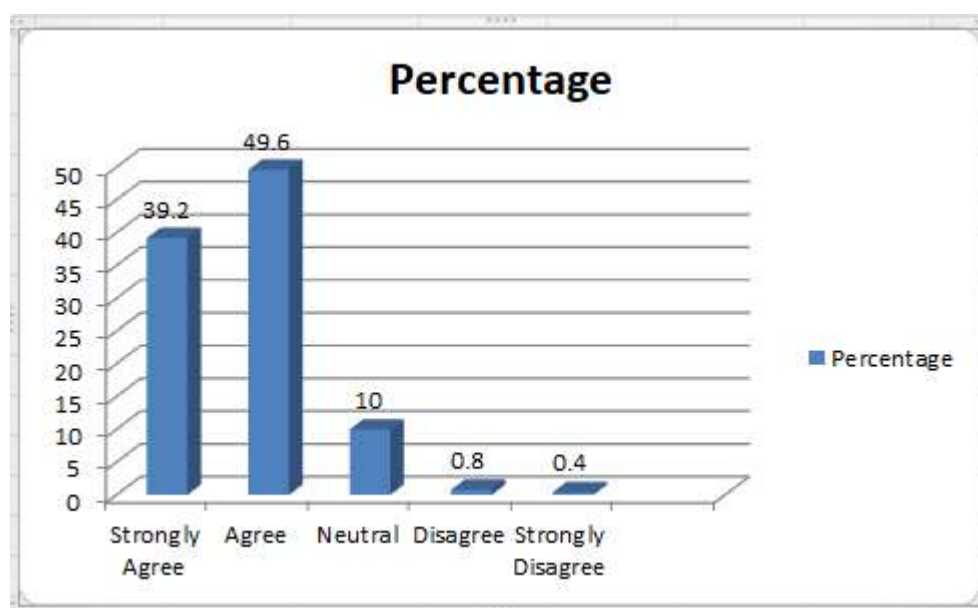


Fig 5. Percentage of responses on basis that the college library has sufficient number of books and reference material relating to college curriculum

Here, it is also observed that Weighted Mean Score of Question 5 is 4.204 which lies between the Likert range of 3.4 to 4.2 i.e. range for 'Strongly Agree'. So, it can be concluded that there the college library has sufficient number of reference material and books relating to college curriculum.

6. Availability of syllabus based e-resources is adequate. (ਸਿਲੇਬਸ ਆਧਾਰਿਤ ਈ-ਸਰੋਤ ਦੀ ਉਪਲਬਧਤਾ ਕਾਫ਼ੀ ਹੈ।)

	Strongly Agree	Agree	Neutral	Disagree	Strongly Disagree	Total
Number of parents Responses	85	102	39	19	05	250
Percentage	34	40.8	15.6	7.6	02	100
Weighted Score	425	408	117	38	05	993
Weighted Mean Score						3.972

Table 6. Shows that out of 250 parents surveyed. 85 i.e. 34% parents strongly agree that availability of syllabus based e-resources is adequate., 102 i.e. 40.8% of parents agree for the same, 39 i.e.15.6%, parents views are neutral, 19 i.e. 7.6% parents are disagree and 5 i.e. 2% parents are strongly disagree.

The results of Question 6 are presented below in the diagram as shown fig.6

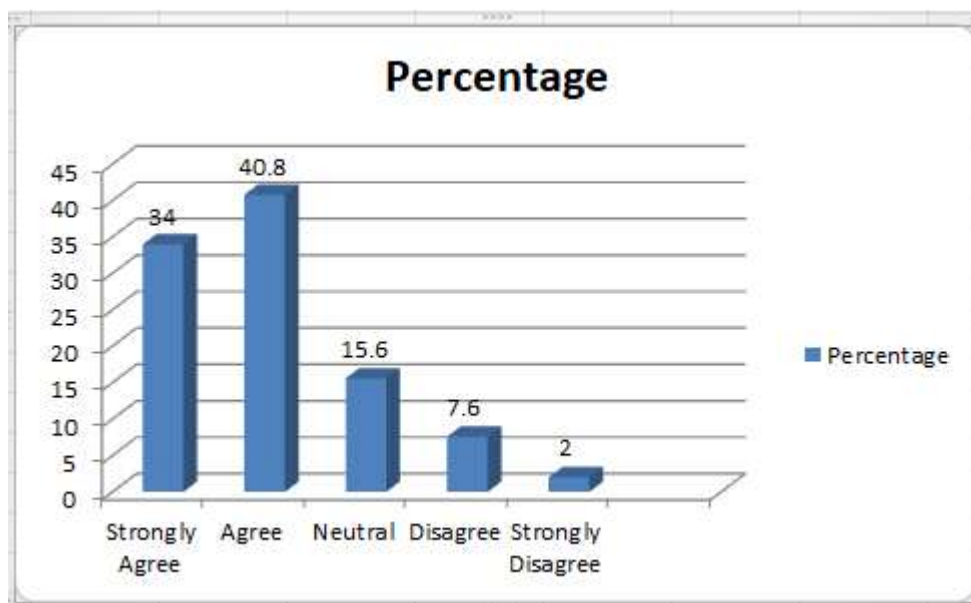


Fig 6. Percentage of responses on basis that the availability of syllabus based e-resources is adequate

Here, it is also observed that Weighted Mean Score of Question 6 is 3.972 which lies between the Likert ranges of 3.4 to 4.2 i.e. range for 'Agree'. So, it can be concluded that the availability of syllabus based e-resources is adequate.

7. The college provides counselling and guidance to the students. (ਕਾਲਜ ਵਿਦਿਆਰਥੀਆਂ ਨੂੰ ਕਾਉਂਸਲਿੰਗ ਅਤੇ ਮਾਰਗਦਰਸ਼ਨ ਪ੍ਰਦਾਨ ਕਰਦਾ ਹੈ।)

	Strongly Agree	Agree	Neutral	Disagree	Strongly Disagree	Total
Number of parents Responses	89	113	42	03	03	250
Percentage	35.6	45.2	16.8	1.2	1.2	100
Weighted Score	445	452	126	06	03	1032
Weighted Mean Score						4.128

Table 7. Shows that out of 250 parents surveyed. 89 i.e. 35.6% parents strongly agree that the college provides counselling and guidance to the students. , 113 i.e. 45.2% of parents agree for the same, 42 i.e.16.8%, parents views are neutral, 3 i.e. 1.2% parents are disagree and 3 i.e. 1.2% parents are strongly disagree.

The results of Question 7 are presented below in the diagram as shown fig.7

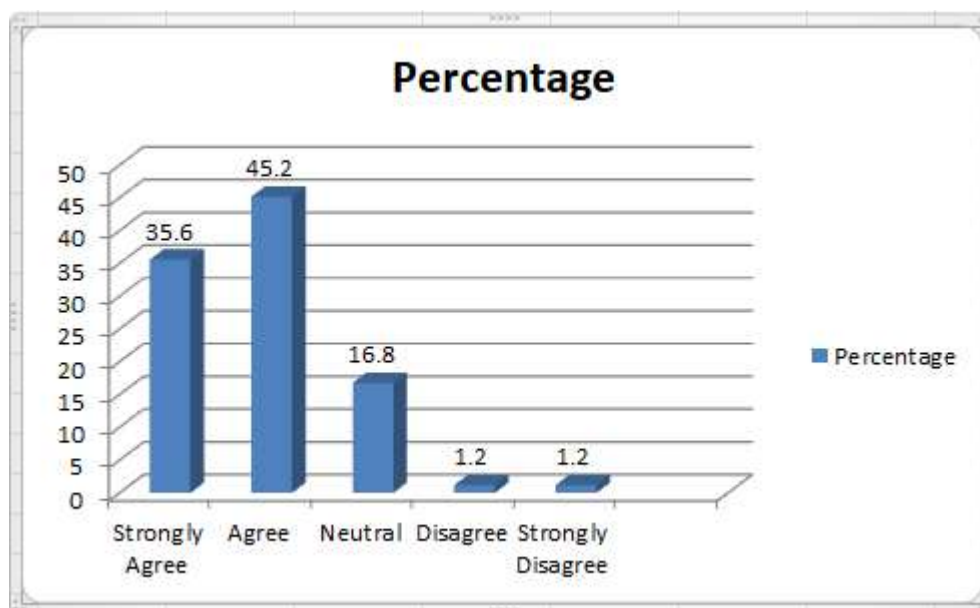


Fig 7. Percentage of responses on basis that the college provides counselling and guidance to the students

Here, it is also observed that Weighted Mean Score of Question 7 is 4.128 which lies between the Likert range of 3.4 to 4.2 i.e. range for 'Agree'. So, it can be concluded that there the agreement between parents that the college provides counselling and guidance to the students.

8. Extracurricular activities are very encouraging.

(ਪਾਠਕ੍ਰਮ ਤੋਂ ਬਾਹਰ ਦੀਆਂ ਗਤੀਵਿਧੀਆਂ ਬਹੁਤ ਉਤਸ਼ਾਹਜਨਕ ਹਨ।)

	Strongly Agree	Agree	Neutral	Disagree	Strongly Disagree	Total
Number of parents Responses	110	106	30	02	02	250
Percentage	44	42.4	12	0.8	0.8	100
Weighted Score	550	424	90	04	02	1070
Weighted Mean Score						4.28

Table 8. Shows that out of 250 parents surveyed. 110 i.e. 44% parents strongly agree that the Extracurricular activities are very encouraging. , 106 i.e. 42.4% of parents agree for the same, 30 i.e.12%, parents views are neutral, 2 i.e. 0.8% parents are disagree and 2 i.e. 0.8% parents are strongly disagree.

The results of Question 8 are presented below in the diagram as shown fig.8

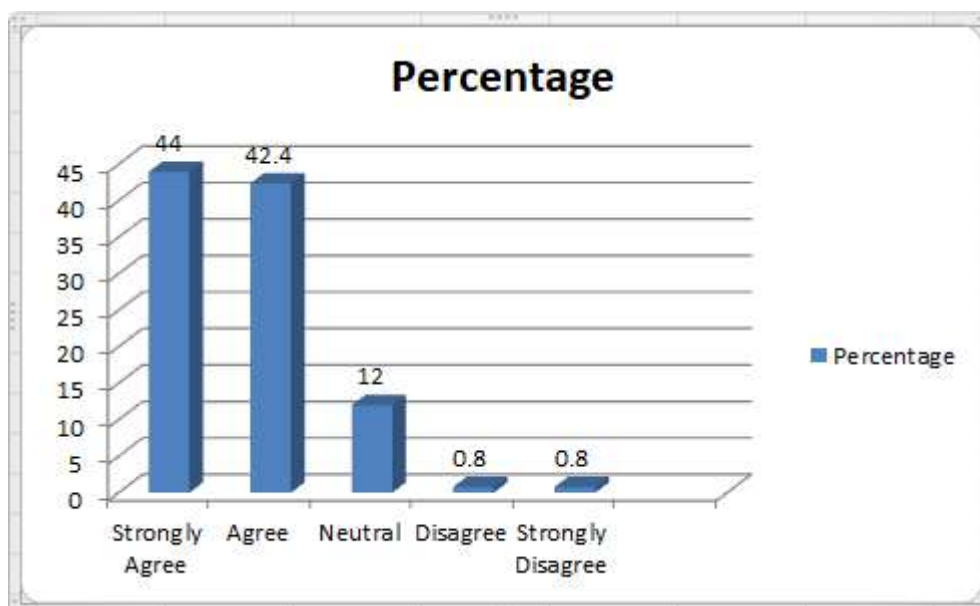


Fig 8 . Percentage of responses on basis that extracurricular activities are very encouraging

Here, it is also observed that Weighted Mean Score of Question 8 is 4.28 which lies between the Likert ranges of 3.4 to 4.2 i.e. range for 'Strongly Agree'. So, it can be concluded that there the agreement between parents that extracurricular activities are very strong.

9. Sports facilities are very attractive. (ਖੇਡਾਂ ਦੀਆਂ ਸਹੂਲਤਾਂ ਬਹੁਤ ਆਕਰਸ਼ਕ ਹਨ।)

	Strongly Agree	Agree	Neutral	Disagree	Strongly Disagree	Total
Number of parents Responses	80	130	32	07	01	250
Percentage	32	52	12.8	2.8	0.4	100
Weighted Score	400	520	96	14	01	1031
Weighted Mean Score						4.124

Table 9. Shows that out of 250 parents surveyed. 80 i.e. 32% parents strongly agree that the college has attractive sports facilities., 130 i.e. 52% of parents agree for the same, 32 i.e. 12.8%, parents views are neutral, 7 i.e. 2.8% parents are disagree and 07 i.e. 2.33% parents are strongly disagree.

The results of Question 9 are presented below in the diagram as shown fig9

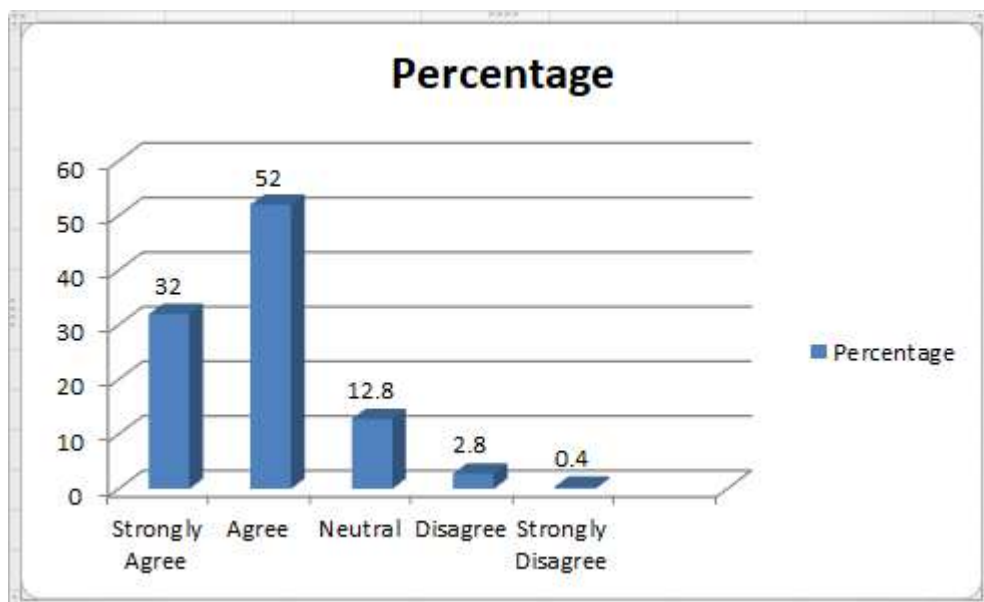


Fig 9. Percentage of responses on basis that the sports facilities are very attractive

Here, it is also observed that Weighted Mean Score of Question 9 is 4.124 which lies between the Likert ranges of 3.4 to 4.2 i.e. range for 'Agree'. So, it can be concluded that there the agreement between parents that the Sports facilities are very attractive.

10. The college makes considerable efforts for holistic growth of students. (ਕਾਲਜ ਵਿੱਦਿਆਰਥੀਆਂ ਦੇ ਸਰਵ ਪੱਖੀ ਵਿਕਾਸ ਲਈ ਕਾਫ਼ੀ ਉਪਰਾਲੇ ਕਰਦਾ ਹੈ।)

	Strongly Agree	Agree	Neutral	Disagree	Strongly Disagree	Total
Number of parents Responses	65	95	48	40	02	250
Percentage	26	38	19.2	16	0.8	100
Weighted Score	325	380	144	80	02	931
Weighted Mean Score						3.724

Table 10. Shows that out of 250 parents surveyed. 65 i.e. 26% parents strongly agree that the college makes considerable efforts for holistic growth of students., 95 i.e.38% of parents agree for the same, 48 i.e.19.2%, parents views are neutral, 40 i.e. 16% parents are disagree and 2 i.e. 0.8% parents are strongly disagree.

The results of Question 10 are presented below in the diagram as shown fig.10

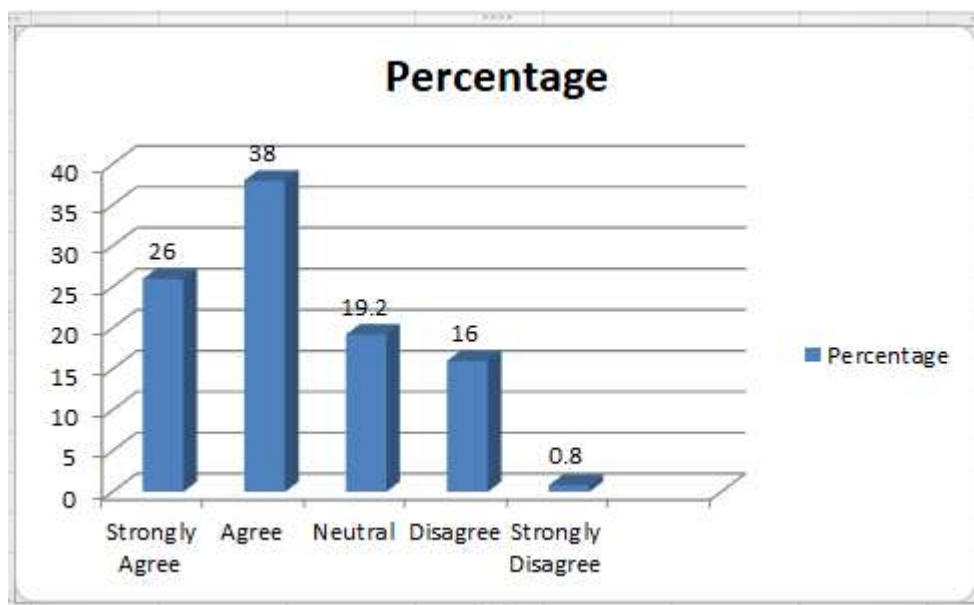


Fig 10. Percentage of responses on basis that the college makes considerable efforts for holistic growth of students

Here, it is also observed that Weighted Mean Score of Question 10 is 3.724 which lies between the Likert ranges of 3.4 to 4.2 i.e. range for 'Agree'. So, it can be concluded that there the agreement between parents that the college makes considerable efforts for holistic growth of students.

Conclusion: -

Following table and diagram present Weighted Mean Score on various questions.

S.no	Questions (1-10)	Weighted Mean Score
1	Your ward is comfortable in coping up with the workload of the college.	4.18
2	The curriculum being taught is relevant to the global requirements.	3.92
3	The soft skills knowledge and integrity in your ward are enhanced while studying in college.	4.13
4	Discipline and work culture of the college is appreciable.	4.16
5	The college library has sufficient number of reference material and books relating to college curriculum.	4.38
6	Availability of syllabus based e-resources is adequate.	4.08
7	The college provides counselling and guidance to the students.	4.12
8	Extracurricular activities are very encouraging.	4.28
9	Sports facilities are very attractive.	4.12
10	The college makes considerable efforts for holistic growth of students.	3.72
Average of Weighted Mean Score		4.10

Weighted Mean Score

